

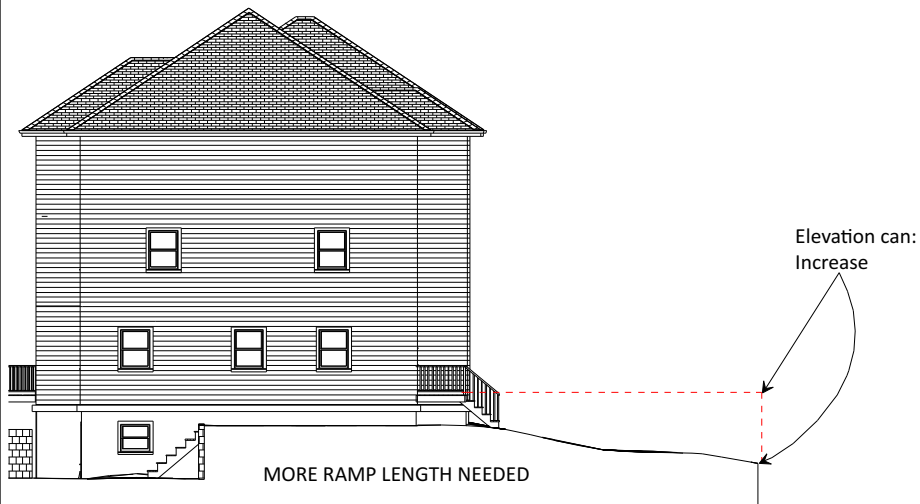
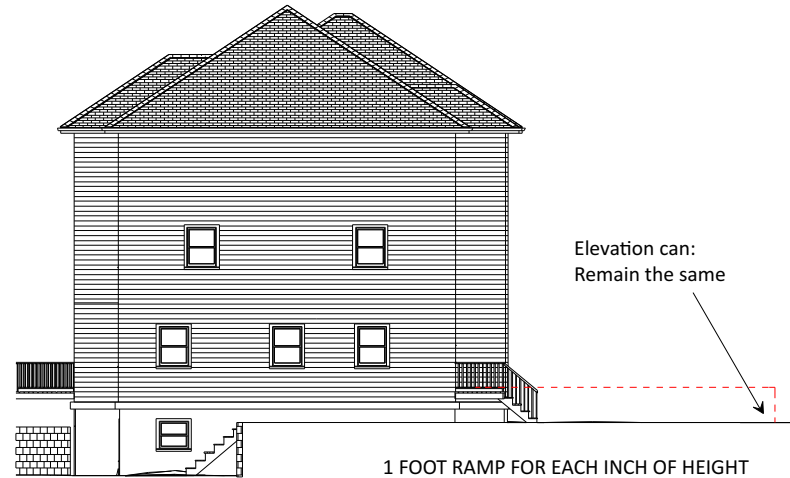
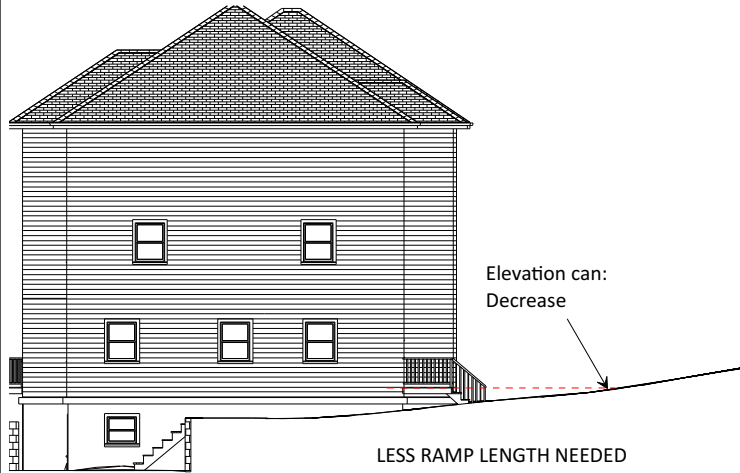
Inch
21"

IDEAL AMOUNT OF RAMP MATERIAL. 1" ELEVATION = 1' RAMP

1:8 Rise To Run

1:12 Rise To Run

Feet



Ramp Considerations:

USER'S ABILITY, EQUIPMENT, CAREGIVER ABILITY
TOPOGRAPHY OF THE LOT
MATERIAL- WOOD, STEEL, ALUMINUM, CONCRETE

Essential Components:

LEVEL LANDING AT THE DOORWAY
OFFSET TO HANDLE SIDE
3' MINIMUM OPEN SPACE AT BOTTOM FOR LANDING
LANDING LOCATION/SURFACE

Ramp Companies:

National Ramp <http://www.nationalramp.com>
EZ-Access <http://www.ezaccess.com>
Prairie View Industries <http://www.pviramps.com/>